

# KIDS FOR YAH

VOLUME 4, ISSUE 3

MARCH 2010

## Warmer days are just ahead!

Hey, Kids! Winter is finally almost over. This is one of the most exciting times of the year. If you have been with us for a while, you know that Yahweh's Scriptural new year begins in the Spring, not in the dead of winter on January 1st like much of the world believes.

Spring is also the time for Yahweh's people to keep the Passover and Feast of Unleavened Bread. Let's quickly review what these days mean to us. The first Passover occurred when the Israelites were slaves in Egypt. Yahweh raised up Moses to lead them out. After a series of plagues, Yahweh dealt the final blow to the arrogant Pharaoh. All the firstborn in the land would die. But the Israelites houses were marked with blood and the death angel "passed over" them.



from our lives. In the New Testament, we learn that Yahshua became our Passover lamb. He was the ultimate perfect sacrifice that Yahweh sent to die to reconcile His people to Himself. Let us keep these days with a right spirit and a humble heart. Happy new year!

The Israelites then left Egypt so hastily that their bread did not even have time to rise. Today we still eat unleavened bread for seven days to remember this great event. All Yahweh's people are required to keep His Feasts. All our leavened items are removed from our dwellings. Symbolically, we remove false teachings

### Inside this issue:

Warmer days are just ...	1
Pop Quiz!	2
Remove the leavening!	3
Grow a Miracle!	4



“Get rid of the old yeast that you may be a new batch without yeast—as you really are. For Messiah, our Pass-over lamb, has been sacrificed.”

—1 Cor 5:7 NIV

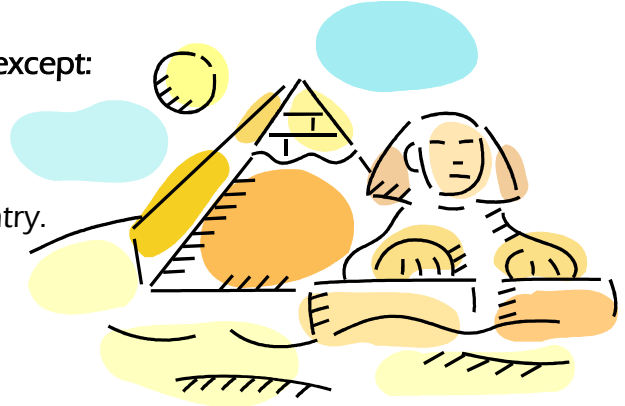


## POP QUIZ!

(Circle the best answer)

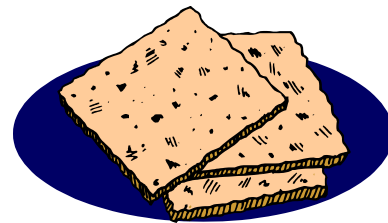
All the firstborn in the land of Egypt were to die except:

1. all the people who hid in caves.
2. those whose doors were marked with blood.
3. those who ran away into a neighboring country.
4. none of the above.



Concerning leavening:

1. All food items containing it must be removed for 7 days.
2. We don't have to worry about removing it.
3. It can symbolically represent false teachings.
4. Both 1 and 3 are correct.



The Israelites left Egypt so quickly that:

1. they forgot to pack bread for lunch.
2. they quickly put yeast in their bread so it could rise on their journey.
3. their bread did not have time to rise.
4. they never ate bread again.



In the New Testament::

1. the people never celebrated the Feasts of Yahweh.
2. only certain people kept the Feasts.
3. people could eat leavening during the Feast of Unleavened Bread.
4. Yahweh's people are still expected to keep the Feasts and avoid leavening during the days of unleavened bread.



## Remove the leavening!

Since we are required to remove leavening from our dwellings for seven days, it is important to know what to look for in your kitchen cabinets and refrigerator, and while you're at school or restaurants. Leavening causes bread to rise and is found in many different items including most breads, cookies, cakes, pancakes, muffins, buns, rolls, breaded and flour tortillas. In each meal plan below, you'll find one item that contains leavening that must be removed. Find it and scratch it out so that you'll have a meal suitable to eat during the Feast of Unleavened Bread!

### Meal Plan #1—Breakfast at School

You're really hungry this morning and everything looks so delicious. Here's what the cafeteria is serving:

Scrambled eggs, pancakes, hash browns, oatmeal, and orange juice.



### Meal Plan #2—School lunch

It's been a long morning and you're ready to eat. The cafeteria servers place the following items on your tray. Which item will you need to throw away?

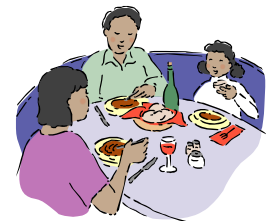
Beef stew, tossed salad, orange wedges, milk, and a chocolate chip cookie.



### Meal Plan #3—Dinner at a restaurant

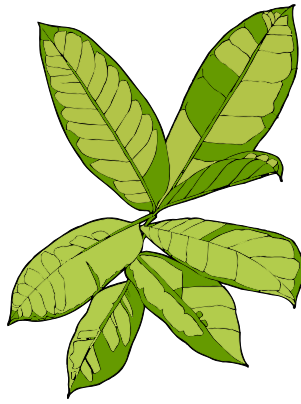
Mom and Dad are taking the family out to dinner as a special treat! Be careful—everything on the menu looks so yummy! You can't decide what you want, but the items below caught your eye and one of them is a no-no!

Breaded chicken, macaroni and cheese, vegetable platter, chicken soup.



Yahweh's Assembly in Yahshua  
2963 County Road 233  
Kingdom City, Missouri 65262

Main Line: 1-573-642-4100  
Toll Free: 1-877-642-4101  
Fax Line: 1-573-642-4104  
Website: [www.KidsForYah.org](http://www.KidsForYah.org)



## Grow a Miracle!

Yahweh's creation is so wonderful! It is amazing that plants grow from tiny seeds. You can easily make a terrarium following the steps below. Don't try this without your parents permission and assistance.

### What you'll need:

- Plastic 2 liter soda pop bottle with cap
- Very sharp scissors or craft knife
- Dirt or potting soil
- Seeds (most will work, but flower or herb seeds work especially well)
- Water



### Follow these instructions:

1. Remove and discard label from bottle, then wash and rinse out the bottle and cap.
2. Cut the bottle close to the bottom. There may be a line near the bottom that you can use as a guide. Place a little dirt in the bottom and plant a few seeds.
3. Lightly water your seeds and put the cap on the top. Then cover the base with the top—you may need to wiggle it a little to fit the top back on. Place your terrarium in a sunny spot and watch the seeds grow! When the plants start growing, you can repot them or plant in a garden. If your soil looks a little dry, unscrew cap and spritz with several squirts of water from a spray bottle.
4. If you'd prefer, you can also use small water bottles. Just don't plant more than 2 seeds at a time otherwise overcrowding will occur and the plants won't grow.

