

KIDS FOR YAH

VOLUME 2, ISSUE 1

JANUARY 2008

IS IT REALLY A NEW YEAR?

Many people in the world believe that a new year begins on January 1st. They often stay up late the evening before and attend parties complete with fireworks and elaborate feasting. Many people might also wish you a "Happy New Year!" But what should you believe as a Follower of Yahweh?



Our modern calendars have their roots in paganism. Yahweh's true new year begins in the spring time when new life is beginning to spring forth—flowers are blooming and sunshine is becoming more prevalent. This is the time we also observe Passover and Unleavened Bread. A new month begins with the sighting of

the brand new crescent moon. We observe the Spring Holy days in the month of Abib, which means "green ears," occurring in either March or April.

Pagan peoples in the past were sun worshippers. The dark days of winter brought great fear upon them as they wondered if the sun would ever shine upon the earth again! They practiced many rituals in an attempt to please their sun deity so that he would send the sun back to warm the earth so that they could plant crops once again for food. Many of these practices were abhorrent to Yahweh! He strongly condemns pagan practices in the pages of His Word. We are to worship Him in spirit and in truth. Don't get caught up in the ways of the world!

Inside this issue:

Is it Really a New Year?	1
Multiple Choice	2
Word Search	3
Fun Projects for Kids!	4

"This month [in the spring] shall be the beginning of months for you; it is to be the first month of the year to you,"

—Ex 12:2

Multiple choice

Circle the correct answer.

Yahweh's new year begins in the....

- a. Spring
- b. Winter
- c. Summer
- d. Fall

Ancient pagans....

- a. worshipped the sun
- b. worshipped Yahweh
- c. didn't worship anything
- d. had no rituals for worship

Most modern people... (Circle all that apply)

- a. believe that a new year begins on January 1st.
- b. have parties and watch fireworks for New Years day
- c. don't know when a true new year begins
- d. obey Yahweh

Ancient pagans...

- a. were afraid of the dark days of winter
- b. did not worry about the sun not coming back
- c. celebrated the true Holy Days
- d. knew when the real new year began





Word Search

Find the following books of the Bible in the puzzle.



Bible Books

D F N M N L X G D G R E W L P E Z E D A
 S E I R S R E B M U N A E E U S W A U G
 U I U A P N S Z I G I K O V H K S H B K
 D R K T E R P X M K B C O I O T S P Q Z
 O K R S E U K N O R G U Q T A O T V P Y
 X N I L O R B Y K G W U F I J C B A N Q
 E S I C U P O B N L V U F C A L A I M F
 J W I A V K J N J G D J S U M X Z M S E
 M A R K J U E N O M E Z U S N Z Z O C V
 D J B D O U T Y J M N Q L R O S V B U A
 D S O C H B M Y E M Y U L J A V O T B P
 X Z S S N L T J F B C F M E C E T Z Z C
 R M C B Y F O D R U X B K E Y P B T C V
 J W U V G R D O A C Z W X D Y C B H A Q
 L K F T G R M V N W B P W Z S B P T P B

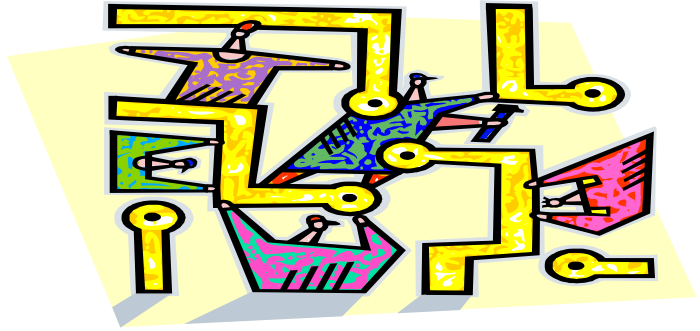
DEUTERONOMY
 JOHN
 LUKE
 NUMBERS

EXODUS
 JOSHUA
 MARK

GENESIS
 LEVITICUS
 MATTHEW

Yahweh's Assembly in Yahshua
2963 County Road 233
Kingdom City, Missouri 65262

Main Line: 1-573-642-4100
Toll Free: 1-877-642-4101
Fax Line: 1-573-642-4104
Website: www.KidsForYah.org



Fun Projects for Kids!

If it's too cold to play outside, try these fun indoor ideas! Children, do not try these projects without your parents permission and supervision.

Make your own Homemade Clay!

You can make all kinds of things with clay, including Bible scenes such as Noah's Ark, complete with little clay animals. All you need are the following:

- 1 Large bowl
- 4 cups of flour
- 1 cup of salt
- 1 1/4 cups of cold water
- Food coloring, optional

Put the flour in the bowl; mix in the salt. Add the water a little bit at a time while stirring the mixture. Mix, mix, mix! Divide the clay and mix in any colors of food coloring you want.



Important Note: This is only for playing. Do not eat!

Make your own Ring Toss game!

All you need are these items:

- Large paper plate
- Paper towel tube
- Several small paper plates
- Safety scissors
- Crayons

Have a grown-up cut an X in the center of the large paper plate. Place the paper towel tube into the hole in the plate so that the tube stands up. Fold the small plates in half and cut out the centers to make rings. Color and decorate the rings any way you like. Play the game by standing several feet away from the tube. Toss the small rings and see if you can get them to land around the tube.

