

# KIDS FOR YAH

VOLUME 5, ISSUE 1

January 2011

## Happy New Year? Not!

Now that the pagan holiday Christmas is over (thankfully!), your teachers and classmates are probably wishing you a "Happy New Year!" We, as Yahweh's people, know that January is not the Biblical new year. The world is very confused and steeped in pagan practices. They think a new year begins in the dead of winter. This practice stems directly from paganism.

Yahweh's real new year begins in the spring time when flowers start blooming and trees begin sprouting fresh, new green leaves and the days get longer. Most people really look forward to spring because many of us live in cold climates and are ready for warmer temperatures after a long, cold winter. Doesn't it just make a whole lot of sense to begin a new year in the spring?



Passover and the Feast of Unleavened Bread are only a few month's away. That is when we renew our commitment to Yahshua. It is a great time to reflect on all the blessings Yahweh gave us and also to think about what goals we'd like to accomplish in the new year.

As a young believer, one of your most important goals should be to develop righteous character by serving Yahweh. You can practice daily by praying, studying the Bible, obeying Yahweh and serving others. Let's look forward to Yahweh's true new year in the spring!

### Inside this issue:

Happy New Year? Not!	1
Do you have faith?	2
Pop Quiz!	3
Word Search	4



## Do you have faith?

We all know that Yahweh's expects His people to have faith in Him. A simple way to define faith is believing in Yahweh and trusting Him. There are many examples in the Bible of prayers being answered because of great faith. But regrettably, there are also numerous examples of unbelief of certain people. Grab your Bibles and let's see some examples of people who lacked faith.

1. Yahshua did not do many miracles in \_\_\_\_\_ because of unbelief (Matt. 13:58).
2. \_\_\_\_\_ was struck dumb because of not believing Gabriel's message that he would have a son (Luke 1:18-20).
3. \_\_\_\_\_ and \_\_\_\_\_ were denied the right to enter the Promised Land because of not trusting in Yahweh's provision of water (Num. 20:12).
4. \_\_\_\_\_ did not believe that Yahshua was alive until he saw the nail prints in his hands (John 20:24-28).
5. \_\_\_\_\_ did not believe the messengers of Yahweh who told her she would have a child in her old age (Gen 18:12-13).
6. \_\_\_\_\_ could not cure a lunatic because of their unbelief (Matt. 17:15-20).
7. \_\_\_\_\_ did not believe the news that his son Joseph was alive (Gen 45:26).
8. \_\_\_\_\_ prayed that Yahweh not destroy His people because of their unbelief (Deut. 7:23-26).
9. \_\_\_\_\_ could not believe all the reports she had heard about King Solomon until she met him (1 Kings 10:1, 6).
10. \_\_\_\_\_ was almost persuaded by Paul to believe in Yahshua (Acts 26:28).
11. \_\_\_\_\_ came to the people preaching repentance, but the Jews did not believe his message (Matt. 21:32).



## Pop Quiz!

Circle the best answer: to each question below

1. Most of the world begins its new year in what month?

- A. January
- B. February
- C. December
- D. March

2. Yahweh's true new year begins in the:

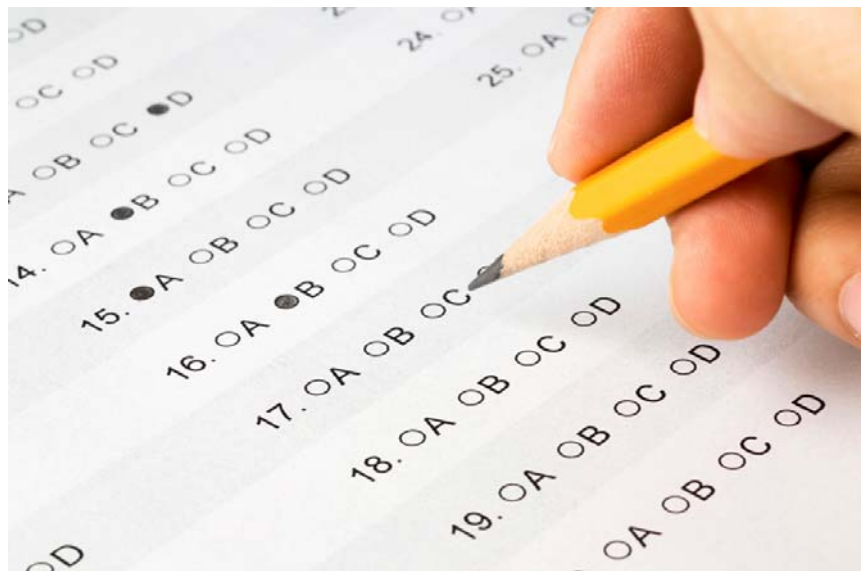
- A. dead of winter.
- B. during summer vacation.
- C. at the Feast of Tabernacles.
- D. in the spring time.

3. One of the most important things a young believer can do is:

- A. buy as many toys as possible.
- B. play video games all day.
- C. develop righteous character.
- D. ignore his or her brothers and sisters.

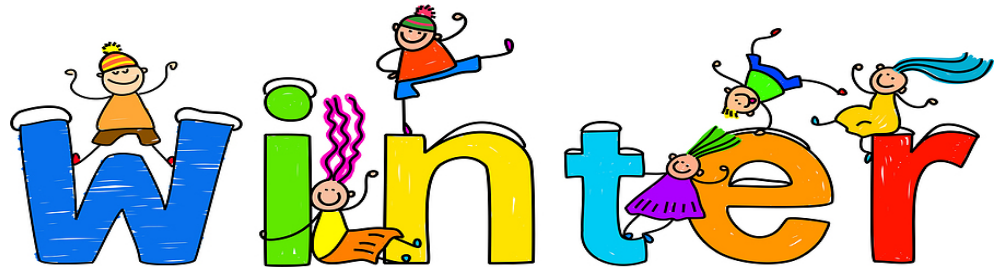
4. During Yahweh's true new year, a believer can expect to see:

- A. the days getting shorter.
- B. the days getting longer
- C. flowers blooming
- D. Both B. and C.



Yahweh's Assembly in Yahshua  
 2963 County Road 233  
 Kingdom City, Missouri 65262

Main Line: 1-573-642-4100  
 Toll Free: 1-877-642-4101  
 Fax Line: 1-573-642-4104  
 Website: www.KidsForYah.org



## People in Yahshua's Life

F	S	S	U	E	A	M	I	T	R	A	B	R	W	Y	E	R	Q	P	Q
J	L	I	M	B	B	V	F	N	A	H	H	H	X	Z	F	R	Q	R	W
U	D	T	M	B	C	S	T	I	V	I	W	B	O	O	Z	T	P	Q	F
R	S	Z	X	E	S	S	Y	E	P	H	Y	K	N	V	L	S	E	O	J
H	B	X	F	F	O	Y	Q	G	P	U	P	B	J	D	M	O	T	N	V
H	Y	K	I	V	Q	N	O	L	V	Q	U	M	Y	C	I	E	E	B	G
S	L	I	E	I	J	E	M	B	A	H	T	N	Z	R	F	T	R	R	R
F	U	Z	M	U	A	D	K	Y	V	H	J	E	M	S	K	B	C	N	L
U	L	R	D	X	N	A	E	I	L	P	X	C	C	Y	L	Y	N	U	U
J	X	A	A	W	X	H	Z	L	P	E	H	P	Q	A	F	S	R	J	L
F	S	T	U	Z	H	W	O	R	R	S	W	P	L	C	A	W	X	Q	E
U	Z	G	D	R	A	E	J	J	T	O	D	D	L	M	T	T	Y	Q	U
Y	R	A	M	H	N	L	J	L	W	J	K	K	O	Q	O	Q	W	C	A
P	I	L	A	T	E	A	P	G	S	Q	X	H	H	X	I	J	O	M	W
A	Y	K	B	T	Y	B	H	W	Q	D	T	A	C	X	P	Z	Q	H	W

Bartimaeus Judas Peter Thomas John  
 Lazarus Pilate Joseph Mary Simeon